



GAT MONTHLY MEMBERSHIP PROGRESS REPORT

Results as of: 3/31/2022

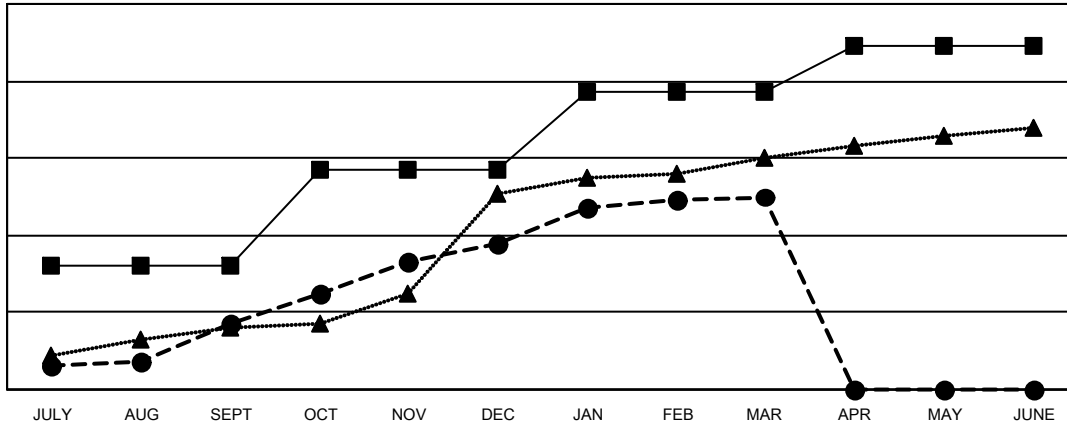
Multiple District 318

LOCATION: INDIA

Clubs			
RESULTS FOR 2021-2022			
QUARTER	NEW CLUB GOAL	NEW CLUBS	DROPPED CLUBS
JULY/AUG/SEPT	32	17	21
OCT/NOV/DEC	25	21	13
JAN/FEB/MAR	20	12	5
APR/MAY/JUNE	12	0	0

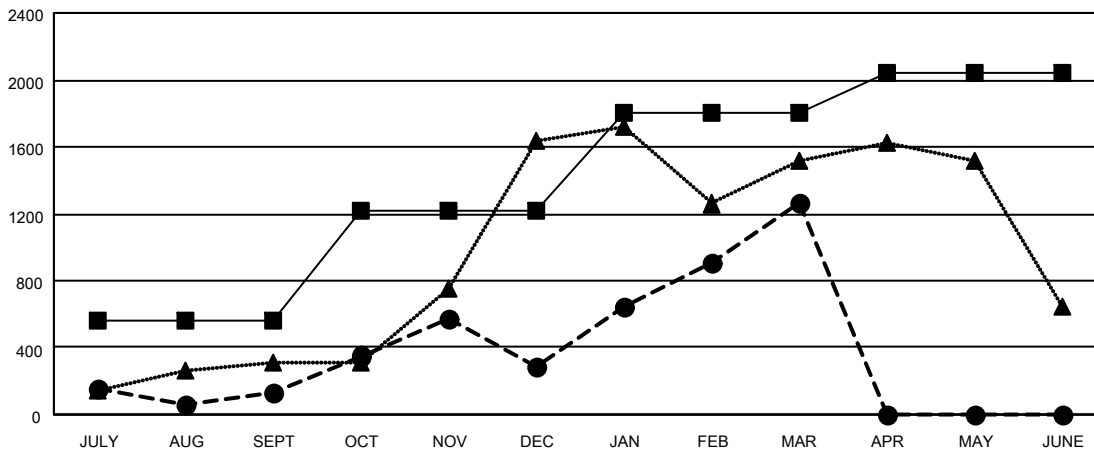
Members			
RESULTS FOR 2021-2022			
QUARTER	MEMBER GROWTH NET GOAL	MEMBER GROWTH ACTUAL	DROPPED MEMBERS ACTUAL (including transfers)
JULY/AUG/SEPT	560	864	697
OCT/NOV/DEC	655	1,184	973
JAN/FEB/MAR	590	1,514	384
APR/MAY/JUNE	240	0	0

GOALS AND ACTUAL NEW CLUBS CUMULATIVE



- CURRENT YEAR GOALS FOR NEW CLUBS
- CURRENT YEAR ACTUAL NEW CLUBS
- ▲- LAST YEAR ACTUAL NEW CLUBS

GOALS AND ACTUAL MEMBERS CUMULATIVE



- MEMBER GROWTH NET GOAL
- MEMBER GROWTH ACTUAL
- ▲- LAST YEAR MEMBERSHIP ACTUAL

DROPPED CLUBS: 39	407 CLUBS OF 760 ADDED 1 OR MORE NEW MEMBERS	GENDER DISTRIBUTION
DROPPED MEMBERS	CLICK HERE FOR CUMULATIVE MEMBERSHIP DATA	MALE 20,062 (80.25%)
DECEASED 84		FEMALE 4,936 (19.74%)
CLUB CANCELLED 692		NON BINARY 1 (0.00%)
OTHER 1,278		PREFER NOT TO ANSWER 0 (0.00%)
TOTAL 2,054		TOTAL FAMILY UNIT MEMBERS 8,823
		FAMILY MEMBERS PAYING HALF DUES 4,686